

A comprehensive rack mounting solution range designed to suit virtually any installation environment — from wall-mounted server cabinets to compact desk and under-desk racks. The range spans five distinct product categories, covering both enclosed cabinet and open rack configurations across multiple rack unit sizes (1RU–12RU). All products are manufactured to consistent width standards with varying depth and height options, giving installers flexibility for different equipment loads and space constraints.



WALL MOUNT CABINETS

Enclosed wall-mounted cabinets available in 4RU and 6RU heights with 300mm or 450mm depth options, all at a consistent 600mm width. Ideal for network, AV, and server equipment where floor space is limited.



MODEL	CODE	RACK HEIGHT	DIMENSION (mm)
WMC4U30	04855395	4RU	600 (W) × 300 (D) × 280 (H)
WMC4U	04855400	4RU	600 (W) × 450 (D) × 280 (H)
WMC6U30	04855407	6RU	600 (W) × 300 (D) × 368 (H)
WMC6U	04855405	6RU	600 (W) × 450 (D) × 368 (H)



HINGED WALL MOUNT CABINETS

A swing-open front panel design allows full rear access without removing the unit from the wall, simplifying installation and ongoing maintenance. Available in 4RU and 6RU configurations with a 550mm depth.



MODEL	CODE	RACK HEIGHT	DIMENSION (mm)
WMC4U55H	04855402	4RU	600 (W) × 550 (D) × 280 (H)
WMC6U55H	04855409	6RU	600 (W) × 550 (D) × 368 (H)

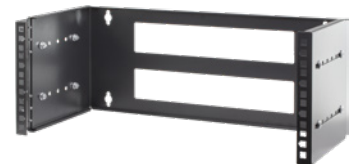


WALL MOUNT RACKS

Open-profile wall racks in 1RU, 2RU, and 4RU sizes, offering a compact and lightweight alternative to enclosed cabinets. Well-suited to small AV, networking, or broadcast installations with limited wall space.



MODEL	CODE	RACK HEIGHT	DIMENSION (mm)
FR1U	04855450	1RU	490 (W) × 215~345 (D) × 66 (H)
FR2U	04855452	2RU	490 (W) × 215~345 (D) × 110 (H)
FR4U	04855456	4RU	490 (W) × 215~345 (D) × 199 (H)



DESK MOUNT RACKS

Available in 9RU and 12RU heights, these racks sit on or near a work surface and keep equipment organised and accessible. A practical choice for production, broadcast, or technical workstation environments.



MODEL	CODE	RACK HEIGHT	DIMENSION (mm)
DR9U	04855462	9RU	500 (W) × 290 (D) × 580 (H)
DR12U	04855465	12RU	500 (W) × 290 (D) × 700 (H)



UNDER-DESK MOUNT RACKS

Compact 1RU and 2RU racks that utilise the space beneath a desk, keeping the workspace clear without sacrificing rack capacity. The slim 482mm width ensures compatibility with standard rack-mount equipment.

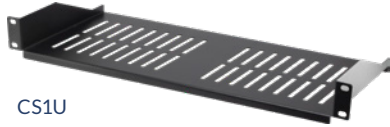


MODEL	CODE	RACK HEIGHT	DIMENSION (mm)
UD1U15	04855430	1RU	482 (W) × 150 (D) × 60 (H)
UD2U15	04855432	2RU	482 (W) × 150 (D) × 105 (H)

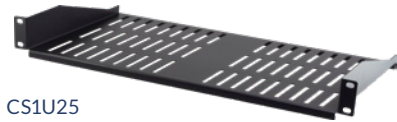


OPTIONAL ACCESSORIES

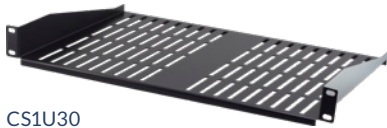
Designed to suit all standard 19" racks.



CS1U



CS1U25



CS1U30

1RU 19" CABINET SHELVES

Model	CS1U	CS1U25	CS1U30
Code	04855412	04855420	04855422
Rack Unit	1RU		
Shelf Size (mm)	482×200	482×250	482×300
Load Weight	15kg		
Material	Quality SPCC cold-rolled steel		

8X BOLT AND NUT SET



Model: BN8
Code: 04855494

The M6 bolts and cage nuts are compatible with standard networking racks, cabinets, and enclosures

- Pack of 8

CABINET SIDE PANEL LOCK SET



Model: SPL2
Code: 04855496

- Lock size: 23mm (diameter)
- Supplied with two keys

Complement your installation with a wide range of Pro2 leads!

From ultra-thin to flexible-head patch leads that fit perfectly in any rack setting, while saving space and looking good!

Check out the full range at:

a.pro2.com.au/patch



2RU 19INCH 30CM DEPTH DRAWER LOCKABLE



Model: D2U30
Code: 04855440

- Size: 483mm × 300mm
- Supplied with two keys

19" 1RU 24 PORT UNLOADED PATCH PANEL KEYSTONE



Model: P1U24U
Code: 04855502

- Compatible with Cat5e, Cat6/6A keystone jacks and couplers
- Supplied with 4 sets of cable ties, screws and cage nuts

19" BRUSH PATCH PANEL COVER PLATES



Model: BR1U
Code: 04855482

1RU



Model: BR2U
Code: 04855486

2RU

19" PATCH PANEL COVER PLATES



Model: B1U
Code: 04855480

1RU



Model: B2U
Code: 04855484

2RU

1RU 19" 5 HOOK CABLE MINDER RACK CABLE MANAGEMENT PANEL



Model: CM5H1U
Code: 04855414

- Helps to maintain proper cable bending radius
- Provides sturdy support for patch leads
- 5 Hooks

1RU 19" 12 SLOT CABLE MINDER RACK CABLE MANAGEMENT PANEL



Model: CM12S1U
Code: 04855416

- Helps to maintain proper cable bending radius
- Provides sturdy support for patch leads

2RU 19" 12 SLOT CABLE MINDER RACK CABLE MANAGEMENT PANEL



Model: CM12S2U
Code: 04855418

- Helps to maintain proper cable bending radius
- Provides sturdy support for patch leads